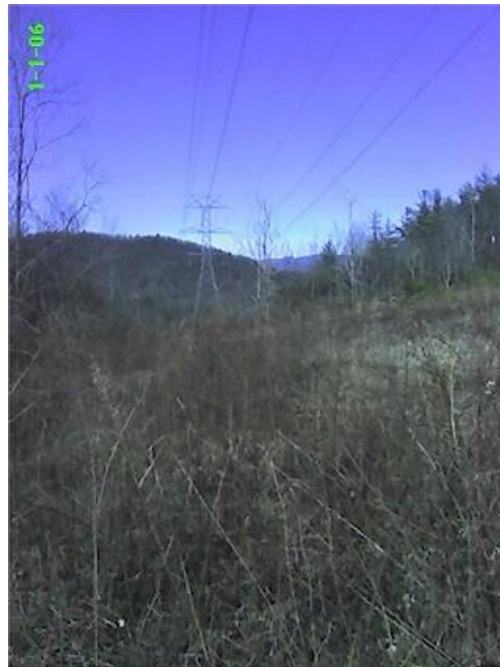
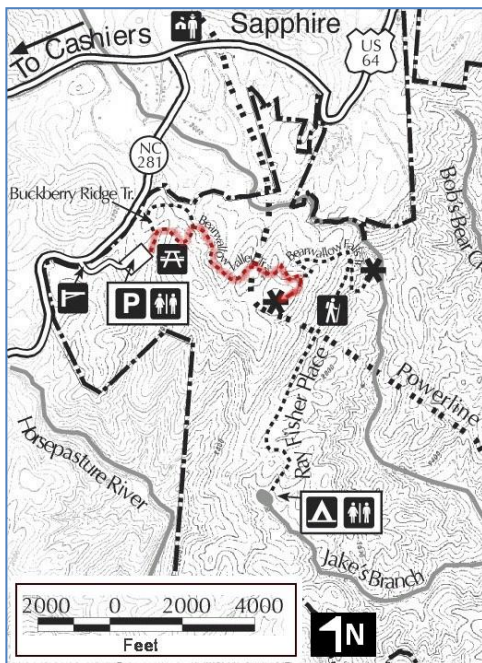


# Jocassee Gorges Easy Hike, NC

**Summary:** A short hike to a great view of the Jocassee Gorges area along Bearwallow Valley Trail near Lake Toxaway NC. The hike starts at the Jocassee Gorges parking area on NC 281 north of White Water Falls and south of US 64. Look for the Bearwallow Valley trail head ( Approximate GPS Coordinates 35°06'03.89"N 82°57'33.94"W ).

The path begins with a short ascent to a small gap and then winds through the woods. It crosses a gravel road and then soon joins the same gravel road. Within a short distance the trail then forks left back onto a path. It soon crosses under high tension power-lines and within a short distance the trail to the view bears to the right. This trail dead-ends at a wooden platform with views south toward South Carolina. In the distance Lakes Jocassee and Keowee can be seen. Return along the same route.



Lakes Jocassee and Keowee in Distance

Please Note: These web pages are for entertainment purposes. The author(s) and owners assume no liability whatsoever for any information presented here. Much of it may have factual errors or is purely subjective opinion.

Copyright 2003 - 2011 DD&G Professional Services, Inc.